

XSERIES RV

X-PLAY

NEW X-SERIES HAS ARRIVED

16FT HARD ROOF TOY HAULER

FAMILY FUN & ADVENTURE AWAITS WITH THIS OFF-ROAD TOY HAULER!

Bring all the conveniences & luxuries of home with you wherever you go in this family sized hauler.

Inside the main cabin you have your main bed, 3 fold down bunks, mini fridge, ensuite room with toilet & shower as well as storage throughout.

Your cooking facilities are external with a slide out stainless unit with 3 burner cooker & sink. The drop down rear access ramp doubles as a sundeck area, perfect for relaxing after a ride.



XSERIESRV.COM.AU

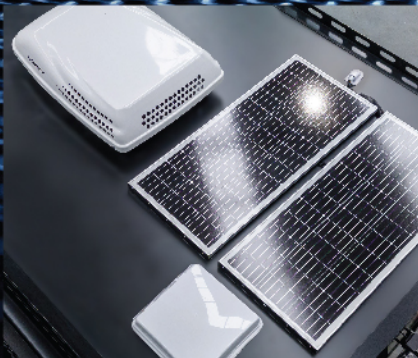
FOLLOW US



X SERIES RV AUSTRALIA



CAPACITY:
5 ADULTS



CHASSIS

Tare 2400kg* Ball Weight 280kg*	●
Drawbar Tube Size 150mm x 50mm x 4mm Hot Dip Galvanised	●
16" Mud Terrain Tyres with 1 Spare Included	●
Alloy Rims	●
Heavy Duty Removable Jockey Wheel	●
Do35 Hitch with Receiver Coupling	●
12" Electric Brakes & Manual Handbrake	●

SUSPENSION

Off Road Independent Suspension System	●
Heavy Duty Coil Springs & Shock Absorbers	●

STORAGE

1 x Large Front Toolbox	●
Dual Fridge Slides with Power Supplies	●
10+ Interior Storage Cupboards & Drawers	●
2 x 9kg Gas Bottle Holders	●
2 x 20L Jerry Can Holders	●

KITCHEN & BATHROOM

Exterior Thetford 3 Burner Cooktop with Gas Plumbing Connection.	●
2 x 95L Fresh Water Tanks	●
125L Grey Water Tank	●
Built in Mini Fridge	●
Full size Mirror on Ensuite Door	●
Thetford Cassette Toilet	●
Installed On Board Hot Water Unit	●
External Shower Outlet	●
Interior Ensuite Shower with Movable Rose Head, Roof Ventilation & LED Lighting	●

SAFETY

Fire Extinguisher Included	●
ADR Approved Safety Chains & Coupling	●
Dual Internal Smoke and Carbon Monoxide Alarms	●
Reversing Camera Included	●

EXTERIOR GENERAL

Fibreglass Body with Aluminum Internal Frame	●
Black Raptorcoat Lower Body Wrap	●
Entry Door with Separate Screen Door	●
Large Electric Sunshade Awning with LED Lighting	●
Electric Operating Rear Loading Ramp/ Sundeck with Safety Railing, Roof with lighting & 9 x Tie Down Points	●
Fold Down Serving / Picnic Bench with Lighting	●

INTERIOR GENERAL

Multimedia Touch screen Stereo System & 24" Smart TV	●
Dometic Dual System Heating & Cooling Air Conditioner & Diesel Heater	●
Internal & External LED Lighting Throughout	●
Queen Size Main Bed	●
3 x Fold Away Bunk / Seat Benches	●
Dual Interior & Exterior Speakers	●
Windows with Block Out & Fly Screen Panels	●
Wood Printed Vinyl Flooring	●
White Cabinetry Finishings with Black Handles	●
Built In Sky Light Hatch with LED Lighting	●

POWER

REDARC Battery Management System with Solar Reg. Charging, & Bluetooth Controls	●
Anderson Plug Car Connections	●
2 x 150ah Lithium Batteries	●
Dual 200w Roof Mounted Solar Panels	●
3000 WATT - 12v / 240v Inverter System	●
240V Connection with Multiple GPO Points	●
Multiple 12V Sockets with Dedicated Fridge Sockets	●

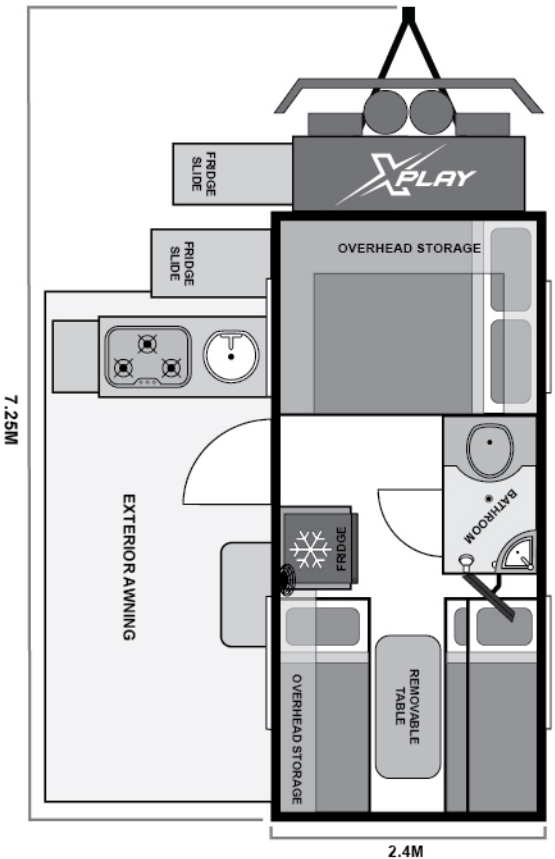
CAMPING ACCESSORIES

62L Dual Zone Fridge Freezer	○
2KVA Generator	○

● Standard ○ Optional Upgrades

* Data accurate at time of print, please visit website product listing for more unit specifications & most current information.

** Weights are indicative and subject to change. The build specification will change the weight. Actual weights will be displayed on compliance plates at time of build. Pods only have diesel heater but other models have both Dometic aircon/diesel heaters



SIZE CLOSED - INCLUDES A/C
Length 7.25m - Width 2.4m - Height 3.1m



ATM

APPROX.
2950KG



TARE

APPROX.
2400KG



BALL WEIGHT

APPROX.
280KG



CHARGER SYSTEM

INVERTER, SOLAR REG
& CHARGE INC.



BATTERY

2 x 150AH
LITHIUM



POWER

240V CONNECTION
INCLUDED



WATER TANKS

2 x 95L CLEAN
1 x 125L GREY



HEATING & COOLING

DOMETIC DUAL SYSTEM
INC. & DIESEL HEATER



CAPACITY

5 ADULTS



GAS & JERRY HOLDERS

2 x 9KG GAS
2 x 20L JERRY